



The International Exhibition on Farm and Agricultural Industry & Supply Expo

06 - 08 December 2017

ICE - Indonesia Convention Exhibition. Tangerang

POST SHOW REPORT

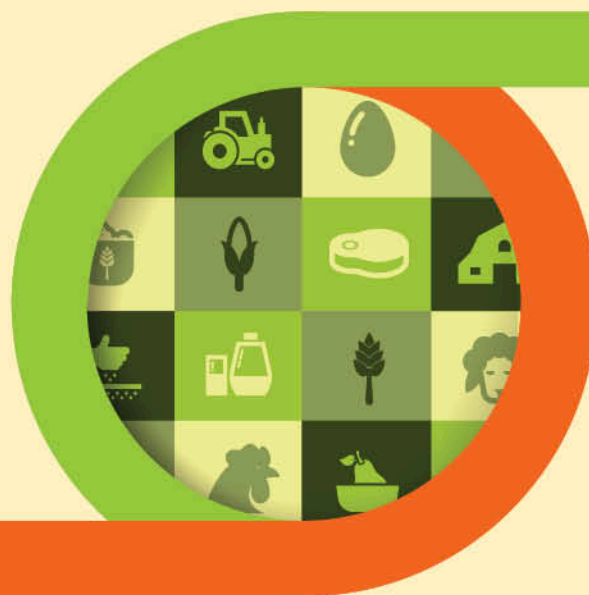


Table of Contents

Great Success for	3
Exhibitor Testimonial	3
Exhibition Information	4
Supporting Ministry	4
Exhibitor Survey	5
Visitor Survey	6
Seminar & Talk Show :	
Seminar & Programmes	8
Seminar Meat & Livestock Australia	9
Seminar ISPI	10
Workshop ASPPHAMI	11
Seminar PT. Bogor Life & Technology	12
Talkshow IJO hydro	13
Seminar Western Union	14

Great Success for FROM FARM TO TABLE 2017

The International Exhibition on Farm and Agricultural Industry & Supply Expo



The show at a glance

To officially mark the opening of the event, a ribbon-cutting ceremony was held on the morning of December 6th, opened by Chief Executive Officer of KRISTA Exhibitions Daud D. Salim, Director of Food and Beverages and Fisheries of Ministry of Industry of The Republic of Indonesia Enny Ratnaningtyas, Chief Marketing Officer of KRISTA Exhibitions Christina Sudjie, Head of Counselling and Human Resources Development of Ministry of Environment and Forestry of The Republic of Indonesia Ir. Helmi Basalama, MM., Secretary of Production and Marketing of Ministry of Cooperatives and Small and Medium Enterprise of The Republic of Indonesia Ir. Rosiana V. Sipayung, MM., Chief of Pest Control Enterprise Association (ASPPHAMI) Ir. Zulkirman, MM., Chief of Horticulture Farmers Association (ASPPEHORTI) Erwin Niwattana, ST., General Secretary of ALSINTANI Abdul Karim, Chief of Indonesian Cold Chain Association Hasanuddin Yasni, Executive Director of Board of Indonesian Palm Oil (DMSI) Iskandar Andi Nuhung, Chief of Indonesian Fruits and Vegetables Association (AESBI) Ir. Hasan Johnny Widjaja, General Secretary of Poultry Breeding Company Association (GPPU) Yudhi Prakosa, Office Manager Economic and Agriculture Affairs of Netherland Embassy Vani Liesyoani, Trade Commisioner of Italian Embassy Alessandro Liberatori, Attache of Economic Section and Agricultural Affairs of Embassy of The Federal Republic of Germany Thomas Schnur

EXHIBITORS' TESTIMONIAL

"A good exhibition. I believe under Kristamedia, this exhibition will grow better for the next few years"
(Rudianto Gunawan, CV Tama Sumber Indonesia)

"A great exhibition, I am amazed of the responses from visitors. A lot of visitors came, we are all delighted"
(Airin, PT Jenawi Subur Indo Rezeki)



"Very interesting and well organized exhibition. Help us to promote the benefit of organic vegetables to the market"
(Irman, PT Delapan Bintang Hortikultura)



"Lot of visitors and lot of transactions, great"
(Hanako, Global Jaya Makmur)

"This exhibition help us to promote our products to consumers. A lot of visitors to our booth"
(Rahmat, PT Dewa Tunggal Abadi)



EXHIBITION INFORMATION

Show	: FROM FARM TO TABLE EXPO 2017 The International Exhibition on Farm and Agricultural Industry & Supply Expo
Exhibition Hours	: 09.30 - 19.00 WIB
Admission	: • The exhibition is open to trade and business visitors only • Admission is FREE by Invitation and business card registration • General public and minors below the age of 14 will not be permitted entry • All visitors must be properly attired; those in shorts and slippers will not be allowed into the exhibition halls

SUPPORTING MINISTRY & ASSOCIATION

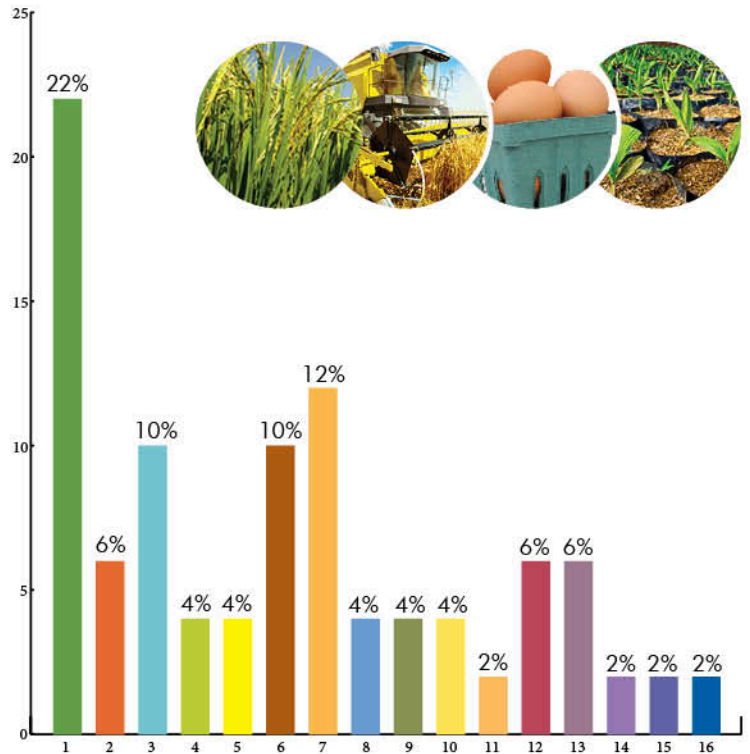
From Farm To Table Expo 2017 supported by:

- Ministry of Agriculture of The Republic of Indonesia
- Ministry of Trade of The Republic of Indonesia
- Ministry of Industry of The Republic of Indonesia
- Ministry of Cooperative Small and Medium Enterprise of Republic of Indonesia
- Indonesian Agriculture Tools and Machinery Association - ALSINTANI
- Board of Indonesian Palm Oil - DMSI
- Poultry Breeding Enterprises Association - GPPU
- Livestock Feeder Entrepreneur Association - GPMT
- Indonesian Pest Control Companies Association - ASPPHAMI
- Indonesia Organic Alliance - AOI
- Indonesia Cold Chain Association - ARPI
- Association of Indonesian Coffee Exporters and Industries - AEKI
- Specialty Coffee Association of Indonesia - (SCAI)
- Indonesia Fruit and Vegetables Exporter Association - AESBI
- Horticulture Farmers Association - ASPPEHORTI
- Indonesia Cacao Association - ASKINDO
- Indonesian Heavy Equipment Agency Association - PAABI
- Indonesia Tea Association - ATI



EXHIBITOR PRODUCTS & SECTORS

- 1. Agricultural Equipment & Machinery
- 2. Aquaculture
- 3. Organic Agriculture
- 4. Pest sprayer
- 5. Food & Beverages
- 6. Seeds & Plant Propagation Material
- 7. Association
- 8. Services
- 9. Poultry
- 10. Livestock & Dairy Farming
- 11. Agri Ecology
- 12. University
- 13. Magazine
- 14. Precise Agriculture
- 15. Agricultural Building Contractors
- 16. Kitchen Equipment Supplier



EXHIBITING COUNTRIES

- 1. Indonesia
- 2. China

TOTAL EXHIBITORS : 98 Exhibitors

TOTAL SQM : 699 sqm

EXHIBITOR SATISFACTION SURVEY

Satisfaction rate : 92%

Next edition participation : 90%

OUR EXHIBITORS





TOTAL VISITORS : 3,606



Local Visitors from Top 10 Cities

- | | |
|--------------|----------------|
| 1. Jakarta | 6. Bandung |
| 2. Tangerang | 7. Purwakarta |
| 3. Bogor | 8. Surabaya |
| 4. Bekasi | 9. Makassar |
| 5. Depok | 10. Yogyakarta |



International Visitors from Various Countries



Malaysia, Korea, China, Singapore, Italia



VISITORS' TESTIMONIAL

"A lot of various fruits that we cannot find easily in the market. Interesting exhibition, I hope that next year will be bigger"
(Irma, BSD Consultant)

"I found many new farming technologies, I am sure next year this will be much better"
(Alex, PT Jamfaa Comfeed)

"Amazing exhibition, always come with new technologies, always bring positive impact for buyers"
(Sofyan Hadi, Gracefull Grantika)

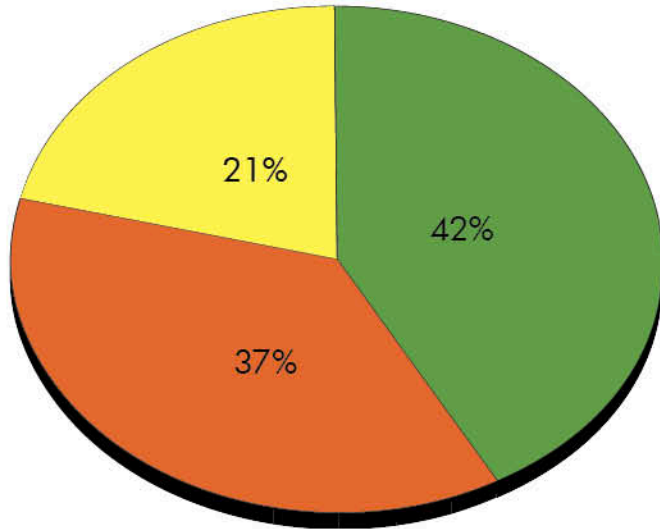
"One of best show on agriculture, hope will grow better for next few years"
(Abdul Kadir, PT Trifando Patria Digital Printing)

"An interesting hydroponic show, I found horticultures also. We can learn many things from this show, good job, congratulations Kristamedia"
(Eko Sutikno, PT Jebesen & Jessen Indonesia)

"It was a good first starting exhibition, We wall hope this kind of exhibition will grow better by the time"
(Gabrielle, PT Sinergi Alam Parama)

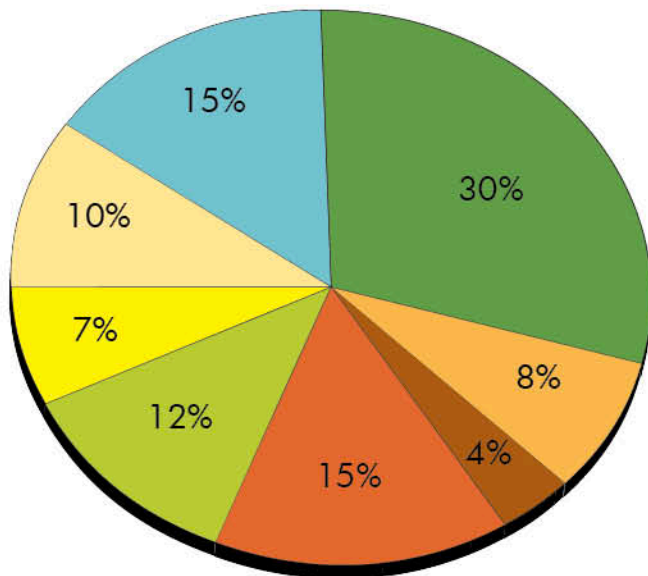


Classification of Visitor by Position



- Owner / CEO / MD /Director
- Sales & Marketing
- General Manager

Visitor Category 2017



- Agriculture
- Distributor
- Horticulture
- F&B
- Fertilizer
- Farm
- University
- Trading



POST SHOW REPORT

6 - 8 Des 2017 . ICE - Indonesia Convention Exhibition. Tangerang

SEMINAR & PROGRAMME FROM FARM TO TABLE 2017



6-9 December 2017
ICE - BSD, Serpong

FFTT - FROM FARM TO TABLE EXPO 2017
The International Exhibition on
Farm and Agricultural Industry & Supply Expo



PROGRAMMES at FFTT

Wednesday, 6 December 2017

09:30 - 10:30	OPENING CEREMONY		
SEMINAR ROOM I			
13:00 - 15:00	Seminar Meat & Livestock Australia Cattle and Beef Industry Updates 2017		
SEMINAR ROOM I			



Thursday, 7 December 2017

08:00 - 16:00	Seminar ISPI Outlook Industri Peternakan 2018		
SEMINAR ROOM I			
14:00 - 17:00	ASPHAMI WORKSHOP Penanganan Kerusakan Komoditas Pasca Panen Akibat Hama & Pelaksanaan Integrated Pest Manajern (IPM) dalam Penerapan HCCP pada Pengolahan Makanan		
SEMINAR ROOM II			

Friday, 8 December 2017

14:00 - 15:00	Seminar WESTERN UNION Pengenalan produk produk WESTERN UNION dan presentasi mengenai perusahaan WESTERN UNION		
SEMINAR ROOM I			

Saturday, 9 December 2017

10:00 - 12:00	Seminar PT. Bogor Life Science & Technology Sukses berbisnis kebun buah skala Orchard		
SEMINAR ROOM I			
13:00 - 15:00 15:00 - 17:00	Talkshow IJO Hydro Seminar Edible Flowers Hydroponics		
SEMINAR ROOM I			

Supporting Ministry and Association



POST SHOW REPORT

6 - 8 Des 2017 . ICE - Indonesia Convention Exhibition. Tangerang

SEMINAR & PROGRAMME FROM FARM TO TABLE 2017



6 - 9 DESEMBER 2017 . ICE - Indonesia Convention Exhibition - Indonesia

06 December 2017

ICE - Indonesia Convention Exhibition - Hall 5



CATTLE & BEEF INDUSTRY UPDATES 2017

Time : 13.00 - 15.00 WIB

Pembicara : Drh. Helen Fadma

Livestock Service Manager
Livestock Export Program



POST SHOW REPORT

6 - 8 Des 2017 . ICE - Indonesia Convention Exhibition. Tangerang

SEMINAR & PROGRAMME FROM FARM TO TABLE 2017

Hosted by :

In conjunction with :



Supported by :



SEMINAR NASIONAL ISPI

OUTLOOK INDUSTRI PETERNAKAN 2018

"Masa Depan Peternakan Domestik di Era Milenial"

7 DESEMBER 2017

Pameran From Farm To Table
Indonesia Convention Exhibition (ICE), BSD - Tangerang

Organised by :



Media partners :



POST SHOW REPORT

6 - 8 Des 2017 . ICE - Indonesia Convention Exhibition. Tangerang

SEMINAR & PROGRAMME FROM FARM TO TABLE 2017

**Penanganan kerusakan komoditi
pasca panen akibat hama dan pelaksanaan
Integrated Pest Management (IPM)
dalam penerapan HACCP pada pengolahan makanan**



07 DESEMBER 2017

ICE - Indonesia Convention Exhibition - Hall 5

Waktu : 14.00 - 17.00 WIB



WORKSHOP & DISKUSI

ASPPHAMI (Asosiasi Perusahaan Pengendalian Hama Indonesia)



POST SHOW REPORT

6 - 8 Des 2017 . ICE - Indonesia Convention Exhibition. Tangerang

12

SEMINAR & PROGRAMME FROM FARM TO TABLE 2017



6-9 DESEMBER 2017 . ICE - Indonesia Convention Exhibition - Indonesia

09 Desember 2017

ICE - Indonesia Convention Exhibition - Hall 5



SUKSES BERBISNIS KEBUN BUAH SKALA ORCHARD

Waktu : 10.00 - 12.00 WIB

Pembicara : Dr. Ir. Mohamad Reza Tirtawinata, MS

*Direktur CSR & Agrobisnis PT. Adhi Kreasi Pratama Komunikasi (AdGlow)
Pendiri dan ketua Yayasan Durian Nusantara*



POST SHOW REPORT

6 - 8 Des 2017 . ICE - Indonesia Convention Exhibition. Tangerang

SEMINAR & PROGRAMME FROM FARM TO TABLE 2017



From Farm to Table

Ijo **KRISTA EXHIBITORS**

06-09 DESEMBER 2017 . ICE - Indonesia Convention Exhibition - Indonesia

09 DECEMBER 2017
ICE - Indonesia Convention Exhibition - Hall 5

Talkshow on "Edible Flowers"

Waktu : 13.00 - 15.00 WIB
Speaker : Eva L A M
Founder and owner of Ijo Hydro
Ijo Hydro is a service company for hydroponic and edible flowers



From Farm to Table

06-09 DESEMBER 2017 . ICE - Indonesia Convention Exhibition - Indonesia



From Farm to Table

06-09 DESEMBER 2017 . ICE - Indonesia Convention Exhibition - Indonesia



From Farm to Table

06-09 DESEMBER 2017 . ICE - Indonesia Convention Exhibition - Indonesia

09 Desember 2017
ICE - Indonesia Convention Exhibition - Hall 5

SUKSES BERBISNIS KEBUN BUAH SKALA ORCHARD

Waktu : 10.00 - 12.00 WIB
Pembicara : Dr. Ir. Mahamad Reza Tirtawinata, MS
Founder and owner of Ijo Hydro
Ijo Hydro is a service company for hydroponic and edible flowers

BLST **KRISTA EXHIBITORS**
Helping Company of IPD

POST SHOW REPORT

6 - 8 Des 2017 . ICE - Indonesia Convention Exhibition. Tangerang

14

SEMINAR & PROGRAMME FROM FARM TO TABLE 2017



WESTERN UNION **WU**SM

moving money for better

From Farm to Table

KRISTA EXHIBITIONS

6-9 DESEMBER 2017 . ICE - Indonesia Convention Exhibition - Indonesia

08 Desember 2017

ICE - Indonesia Convention Exhibition - Hall 5

PENGENALAN PRODUK PRODUK WESTERN UNION DAN PRESENTASI MENGENAI PERUSAHAAN WESTERN UNION

Time : 14.00 - 15.00 WIB

Pembicara : Arman Bahriadi

Senior country manager of Western Union Indonesia

